

# Stainless steel multi-stage centrifugal pump

Close coupled type

**KR $\frac{4}{5}$ -C**

Direct coupled type

**KR4-M**



**KR $\frac{4}{5}$ -C**



**KR4-M**



## Application

The pump is designed to avoid from making red discolourment of water adopting stainless steel casing, reinforced plastic or bronze impeller and stainless steel shaft, therefore, the pump is suitable for :

- ※Drinking water
- ※Building water supply
- ※Food industry
- ※Industrial water supply, etc.

## Features

### 1 Rugged and heavy duty

Precision cast stainless steel is adopted for pump casing and flanges, so there is no worry of strain.

### 2 Quiet operation

Adoption of multi-stage construction and double volute casing reduced operation noise.

### 3 High performance

Due to adoption of multi-stage construction and precision cast stainless steel, friction loss inside the pump can be reduced and realized high performance.

### 4 Easy maintenance

Because of back pull out construction, the pump can be easily disassembled and reassembled without taking out the piping for maintenance and inspection.

## Standard specifications

|              |             | KR <sub>5</sub> <sup>4</sup> -C                             | KR4-M                    |
|--------------|-------------|---|--------------------------|
| Liquid       | Kind        | Clean water   |                          |
|              | Temperature | 0~40°C  |                          |
| Material     | Impeller    | Resin or BC6 (See pump data)                                |                          |
|              | Shaft       | SUS304  |                          |
|              | Casing      | SCS13   |                          |
| Motor        | Kind        | TEFC, indoor  | Open and drip-proof (*1) |
|              | Speed       | 50Hz: 3,000min <sup>-1</sup> , 60Hz: 3,600min <sup>-1</sup> |                          |
| Installation |             | Indoor  |                          |
| Construction | Impeller    | Closed type   |                          |
|              | Shaft seal  | Mechanical seal (Ceramics × Carbon)                         |                          |
|              | Bearing     | Sealed ball bearing   |                          |
| Flange       |             | JIS10kg/cm <sup>2</sup> thin type                           |                          |
| Colour       |             | Pump: Silver gray, Motor & Base: Gray                       |                          |
| Suction lift |             | - 6m (20°C)   |                          |

(\*1) TEFC motor is available upon request.

## Standard accessories

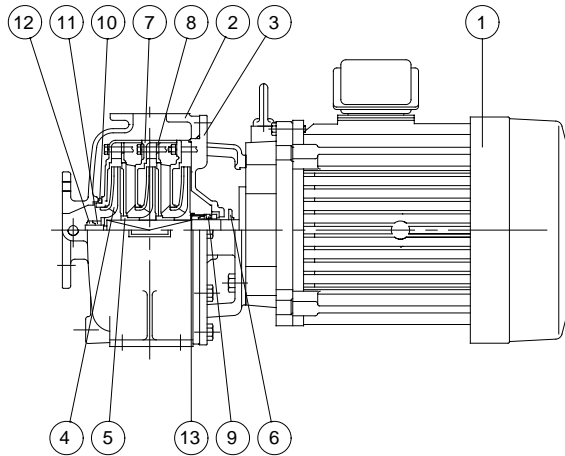
- 1 pc. Electric motor
- 1 pc. Base plate
- 1 pc. Suction mating flange threaded to PT and w/packing and bolts
- 1 pc. Discharge mating flange threaded to PT and w/packing and bolts

## Optional accessories

Foundation bolts, foot valve, pressure gage, vacuum gage, vibration isolator, etc.

# Parts List

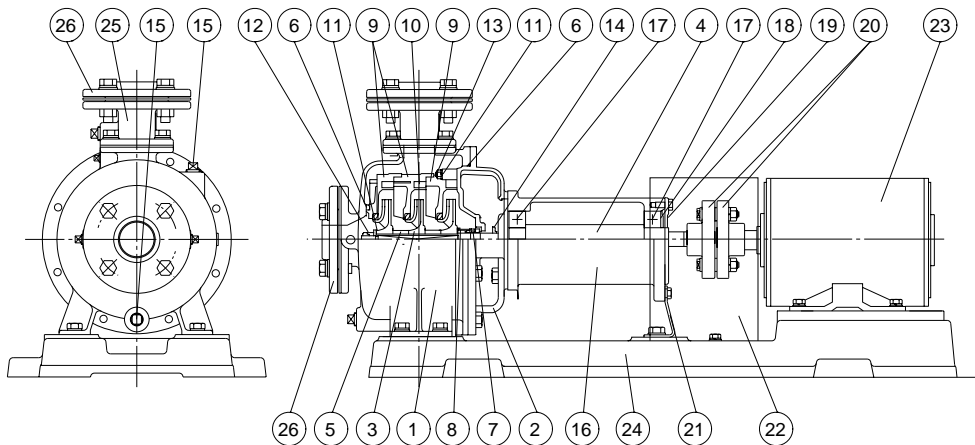
## KR<sup>4</sup><sub>5</sub>-C



| No. | Name         | Materials                |
|-----|--------------|--------------------------|
| 1   | Motor        |                          |
| 2   | Casing       | SCS13 (JIS G5121)        |
| 3   | Casing cover | SCS13 (JIS G5121)        |
| 4   | Impeller     | Resin or BC6 (JIS H5120) |
| 5   | Sleeve       | BC6 (JIS H5120)          |
| 6   | Deflector    | Rubber (NBR)             |
| 7   | Guide vane   | Resin or BC6 (JIS H5120) |

| No. | Name            | Materials                |
|-----|-----------------|--------------------------|
| 8   | Seperator       | Resin or BC6 (JIS H5120) |
| 9   | Mechanical seal |                          |
| 10  | O ring          | Rubber (NBR)             |
| 11  | Impeller nut    | SUS304                   |
| 12  | Plain washer    | SUS304                   |
| 13  | Spring stopper  | SUS304                   |

## KR4-M

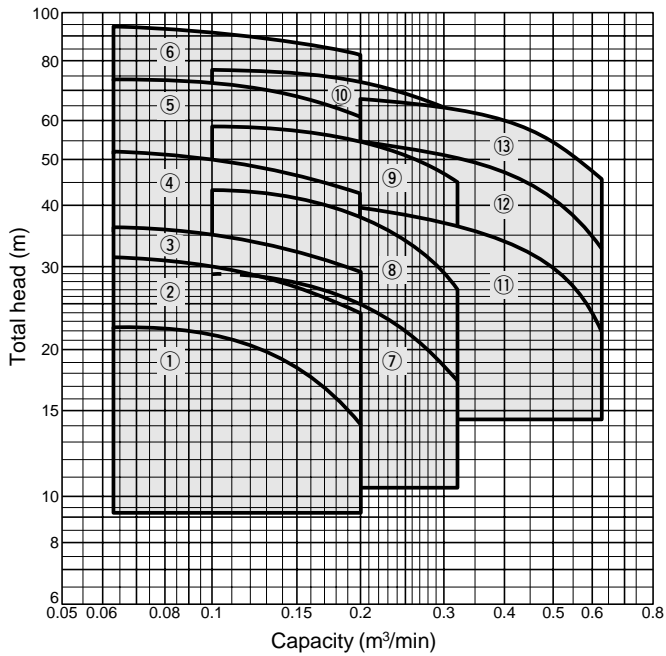


| No. | Parts Name      | Materials        | Note     |
|-----|-----------------|------------------|----------|
| 1   | Casing          | SCS13            | JISG5121 |
| 2   | Casing cover    | SCS13            | JISG5121 |
| 3   | Impeller        | Resin or BC6     |          |
| 4   | Shaft           | SUS304           | JISG4305 |
| 5   | Sleeve          | BC6              | JISH5120 |
| 6   | O-ring          | Rubber (NBR)     |          |
| 7   | Mechanical seal | Ceramic x Carbon |          |
| 8   | Spring stopper  | SUS304           | JISG4305 |
| 9   | Guide vane      | Resin or BC6     |          |
| 10  | Separater       | SUS304           | JISG4305 |
| 11  | Plain washer    | SUS304           | JISG4305 |
| 12  | Impeller nut    | SUS304           | JISG4305 |
| 13  | Nut             | SUS304           | JISG4305 |

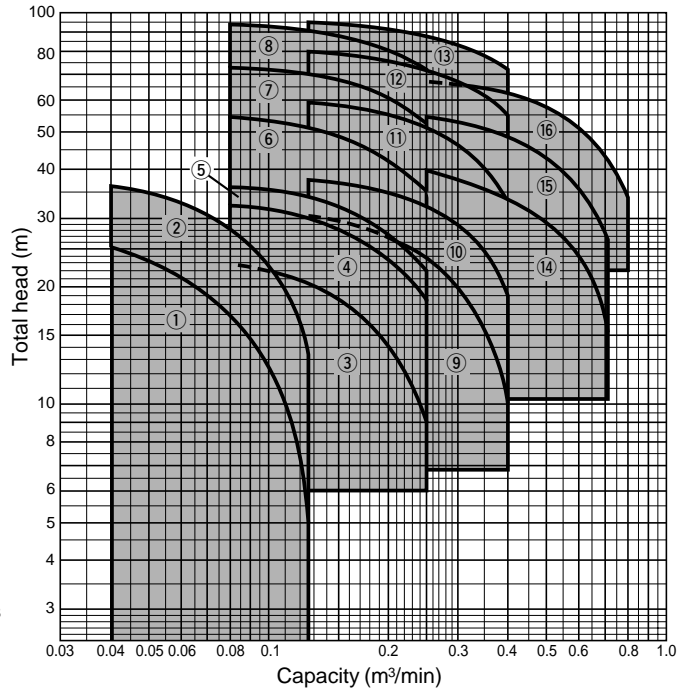
| No. | Parts Name      | Materials    | Note     |
|-----|-----------------|--------------|----------|
| 14  | Deflector       | Rubber (NBR) |          |
| 15  | Plug            | SCS13        | JISG5121 |
| 16  | Bearing box     | FC150        | JISG5501 |
| 17  | Ball bearing    |              |          |
| 18  | Wave washer     | S65CM        | JISG3311 |
| 19  | Bearing cover   | FC150        | JISG5501 |
| 20  | Shaft coupling  |              |          |
| 21  | Support         | SPCC         | JISG3141 |
| 22  | Safety guard    | SPCC         | JISG3141 |
| 23  | Motor           |              |          |
| 24  | Bed             | FC150        | JISG5501 |
| 25  | Connecting pipe | SCS13        | JISG5121 |
| 26  | Mating flange   | SCS13        | JISG5121 |

# KR<sub>5</sub>-C Selection

50Hz



60Hz

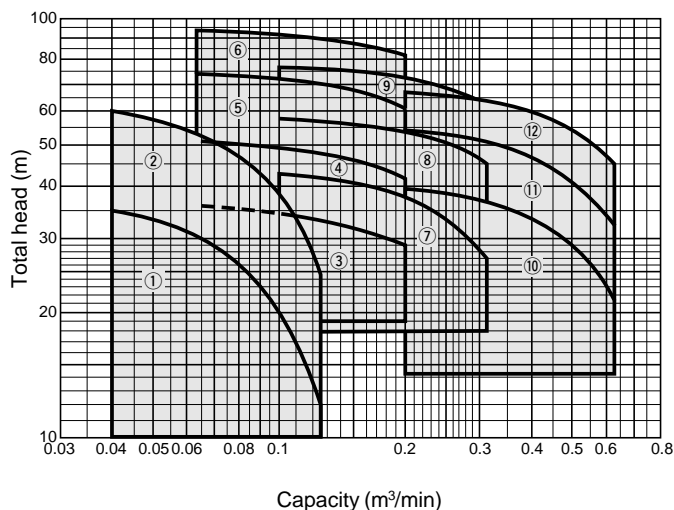


| Hz           | Bore (mm) | Model            | Motor |       | Performance      |        |                  |        |                  |        | Max.back pressure |       |
|--------------|-----------|------------------|-------|-------|------------------|--------|------------------|--------|------------------|--------|-------------------|-------|
|              |           |                  | kW    | Phase | Capacity m³/min. | Head m | Capacity m³/min. | Head m | Capacity m³/min. | Head m | MPa<Kgf/cm²>      |       |
| 50           | 40 × 40   | KR4-405-CN0.75   | 0.75  | 3     | 0.063            | 22.5   | 0.125            | 20     | 0.2              | 14     | 0.75              | <7.7> |
|              |           | KR4-405-CN1.1    | 1.1   | 3     | 0.063            | 31     | 0.125            | 38.5   | 0.2              | 24     | 0.68              | <6.9> |
|              |           | KR5-405-C1.5     | 1.5   | 3     | 0.063            | 36     | 0.125            | 33.5   | 0.2              | 29     | 0.63              | <6.4> |
|              |           | KR5-405-C2.2     | 2.2   | 3     | 0.063            | 51     | 0.125            | 48     | 0.2              | 42     | 0.48              | <4.9> |
|              |           | KR5-405-C3.7     | 3.7   | 3     | 0.063            | 74     | 0.125            | 70     | 0.2              | 61     | 0.25              | <2.6> |
|              |           | KR5-405-C5.5     | 5.5   | 3     | 0.063            | 93.5   | 0.125            | 89.5   | 0.2              | 81     | 0.059             | <0.6> |
|              | 50 × 40   | KR5-505-C1.5     | 1.5   | 3     | 0.1              | 29     | 0.2              | 25     | 0.315            | 17.5   | 0.7               | <7.1> |
|              |           | KR5-505-C2.2     | 2.2   | 3     | 0.1              | 43     | 0.2              | 38     | 0.315            | 27     | 0.56              | <5.7> |
|              |           | KR5-505-C3.7     | 3.7   | 3     | 0.1              | 58     | 0.2              | 54     | 0.315            | 45     | 0.41              | <4.2> |
|              |           | KR5-505-C5.5     | 5.5   | 3     | 0.1              | 76     | 0.2              | 72     | 0.315            | 63     | 0.24              | <2.4> |
|              | 65 × 50   | KR5-655-C3.7     | 3.7   | 3     | 0.2              | 39.5   | 0.4              | 34     | 0.63             | 21.5   | 0.59              | <6.0> |
|              |           | KR5-655-C5.5     | 5.5   | 3     | 0.2              | 54.5   | 0.4              | 47     | 0.63             | 32     | 0.44              | <4.5> |
| KR5-655-C7.5 |           | 7.5              | 3     | 0.2   | 67               | 0.4    | 60               | 0.63   | 45               | 0.32   | <3.3>             |       |
| 60           | 32 × 40   | KR4-326-CN0.4S   | 0.4   | 1(*1) | 0.04             | 25     | 0.08             | 17     | 0.125            | 4      | 0.441             | <4.5> |
|              |           | KR4-326-CN0.75S2 | 0.75  | 1(*2) | 0.04             | 36     | 0.08             | 28     | 0.125            | 13.5   | 0.527             | <6.4> |
|              | 40 × 40   | KR4-406-CN0.75   | 0.75  | 3     | 0.08             | 22.5   | 0.16             | 17.5   | 0.25             | 9      | 0.75              | <7.7> |
|              |           | KR4-406-CN1.1    | 1.1   | 3     | 0.08             | 32     | 0.16             | 27.5   | 0.25             | 18.5   | 0.67              | <6.8> |
|              |           | KR5-406-C1.5     | 1.5   | 3     | 0.08             | 36     | 0.16             | 31     | 0.25             | 22     | 0.63              | <6.4> |
|              |           | KR5-406-C2.2     | 2.2   | 3     | 0.08             | 54     | 0.16             | 47.5   | 0.25             | 35     | 0.45              | <4.6> |
|              |           | KR5-406-C3.7     | 3.7   | 3     | 0.08             | 72     | 0.16             | 66.5   | 0.25             | 53     | 0.27              | <2.8> |
|              |           | KR5-406-C5.5     | 5.5   | 3     | 0.08             | 93.5   | 0.16             | 87     | 0.25             | 72     | 0.059             | <0.6> |
|              | 50 × 40   | KR5-506-C1.5     | 1.5   | 3     | 0.125            | 30.5   | 0.25             | 23.5   | 0.4              | 10     | 0.68              | <6.9> |
|              |           | KR5-506-C2.2     | 2.2   | 3     | 0.125            | 37.5   | 0.25             | 32     | 0.4              | 19     | 0.61              | <6.2> |
|              |           | KR5-506-C3.7     | 3.7   | 3     | 0.125            | 59.5   | 0.25             | 51.5   | 0.4              | 33     | 0.39              | <4.0> |
|              |           | KR5-506-C5.5     | 5.5   | 3     | 0.125            | 80     | 0.25             | 72     | 0.4              | 54     | 0.2               | <2.0> |
|              |           | KR5-506-C7.5     | 7.5   | 3     | 0.125            | 95     | 0.25             | 88     | 0.4              | 71     | 0.049             | <0.5> |
|              | 65 × 50   | KR5-656-C3.7     | 3.7   | 3     | 0.25             | 39.5   | 0.5              | 29.5   | 0.71             | 15.5   | 0.59              | <6.0> |
|              |           | KR5-656-C5.5     | 5.5   | 3     | 0.25             | 54.5   | 0.5              | 43     | 0.71             | 26.5   | 0.44              | <4.5> |
|              |           | KR5-656-C7.5     | 7.5   | 3     | 0.25             | 67     | 0.5              | 58     | 0.8              | 33     | 0.32              | <3.3> |

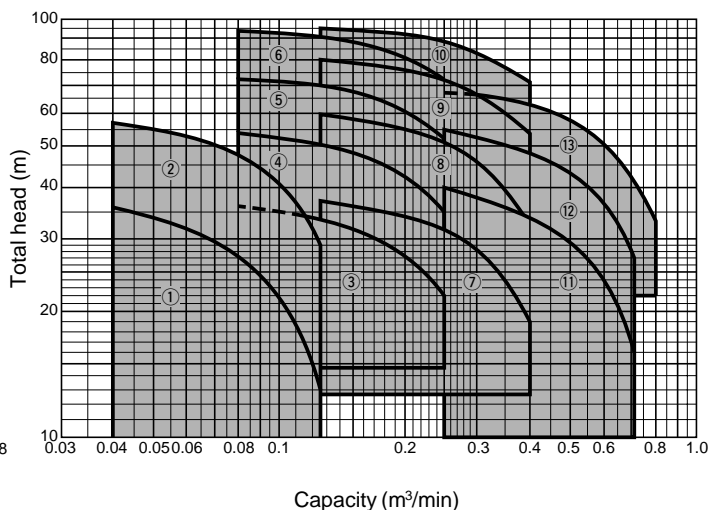
(\*1) 100V only (\*2) 200V only

# KR4-M Selection

50Hz

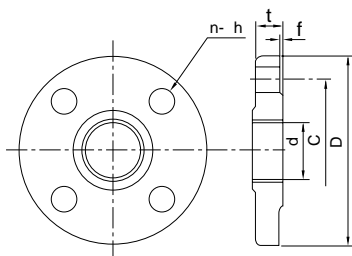


60Hz



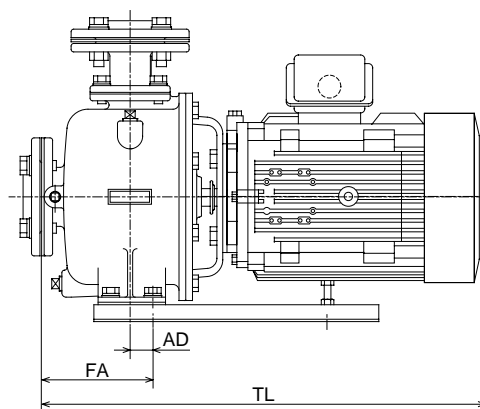
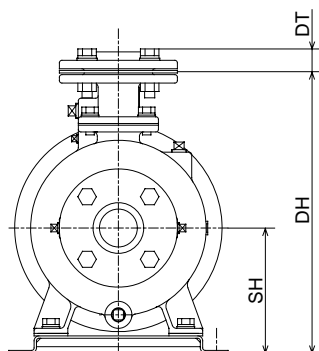
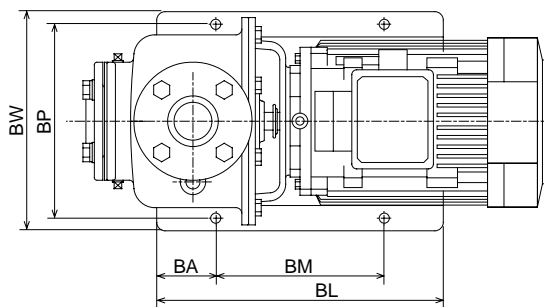
| Hz           | Bore (mm)    | Model         | Motor |       | Performance |       |          |       |          |       | Max.back pressure |       |
|--------------|--------------|---------------|-------|-------|-------------|-------|----------|-------|----------|-------|-------------------|-------|
|              |              |               | kW    | Phase | Capacity    | Head  | Capacity | Head  | Capacity | Head  | MPa<Kgf/cm²>      |       |
|              |              |               |       |       | m³/min.     | m     | m³/min.  | m     | m³/min.  | m     |                   |       |
| 50           | 32 × 40      | KR4-325-M0.75 | 0.75  | 3     | 0.040       | 35.0  | 0.080    | 26.5  | 0.125    | 12.0  | 0.15              | <1.5> |
|              |              | KR4-325-M1.5  | 1.5   | 3     | 0.040       | 60.0  | 0.080    | 47.5  | 0.125    | 24.0  | 0.22              | <2.2> |
|              | 40 × 40      | KR4-405-M1.5  | 1.5   | 3     | 0.063       | 36.0  | 0.125    | 33.5  | 0.200    | 29.0  | 0.22              | <2.2> |
|              |              | KR4-405-M2.2  | 2.2   | 3     | 0.063       | 51.0  | 0.125    | 48.0  | 0.200    | 42.0  | 0.22              | <2.2> |
|              |              | KR4-405-M3.7  | 3.7   | 3     | 0.063       | 74.0  | 0.125    | 70.0  | 0.200    | 61.0  | 0.22              | <2.2> |
|              | 50 × 40      | KR4-405-M5.5  | 5.5   | 3     | 0.063       | 93.5  | 0.125    | 89.5  | 0.200    | 81.0  | 0.049             | <0.5> |
|              |              | KR4-505-M2.2  | 2.2   | 3     | 0.100       | 43.0  | 0.200    | 38.0  | 0.315    | 27.0  | 0.22              | <2.2> |
|              |              | KR4-505-M3.7  | 3.7   | 3     | 0.100       | 58.0  | 0.200    | 54.0  | 0.315    | 45.0  | 0.22              | <2.2> |
|              | 65 × 50      | KR4-505-M5.5  | 5.5   | 3     | 0.100       | 76.0  | 0.200    | 72.0  | 0.315    | 63.0  | 0.14              | <1.4> |
| KR4-655-M3.7 |              | 3.7           | 3     | 0.200 | 39.5        | 0.400 | 34.0     | 0.630 | 21.5     | 0.22  | <2.2>             |       |
| KR4-655-M5.5 |              | 5.5           | 3     | 0.200 | 54.5        | 0.400 | 47.0     | 0.630 | 32.0     | 0.14  | <1.4>             |       |
| 60           | 32 × 40      | KR4-655-M7.5  | 7.5   | 3     | 0.200       | 67.0  | 0.400    | 60.0  | 0.630    | 45.0  | 0.14              | <1.4> |
|              |              | KR5-326-M0.75 | 0.75  | 3     | 0.040       | 35.5  | 0.080    | 27.5  | 0.125    | 13.0  | 0.15              | <1.5> |
|              | 40 × 40      | KR4-326-M1.5  | 1.5   | 3     | 0.040       | 57.5  | 0.080    | 48.0  | 0.125    | 29.0  | 0.22              | <2.2> |
|              |              | KR4-406-M1.5  | 1.5   | 3     | 0.080       | 36.0  | 0.160    | 31.0  | 0.250    | 22.0  | 0.22              | <2.2> |
|              |              | KR4-406-M2.2  | 2.2   | 3     | 0.080       | 54.0  | 0.160    | 47.5  | 0.250    | 35.0  | 0.22              | <2.2> |
|              | 50 × 40      | KR4-406-M3.7  | 3.7   | 3     | 0.080       | 72.0  | 0.160    | 66.5  | 0.250    | 53.0  | 0.22              | <2.2> |
|              |              | KR4-406-M5.5  | 5.5   | 3     | 0.080       | 93.5  | 0.160    | 87.0  | 0.250    | 72.0  | 0.049             | <0.5> |
|              |              | KR4-506-M2.2  | 2.2   | 3     | 0.125       | 37.5  | 0.250    | 32.0  | 0.400    | 19.0  | 0.22              | <2.2> |
|              | 65 × 50      | KR4-506-M3.7  | 3.7   | 3     | 0.125       | 59.5  | 0.250    | 51.5  | 0.400    | 33.0  | 0.22              | <2.2> |
| KR4-506-M5.5 |              | 5.5           | 3     | 0.125 | 80.0        | 0.250 | 72.0     | 0.400 | 54.0     | 0.14  | <1.4>             |       |
| KR4-506-M7.5 |              | 7.5           | 3     | 0.125 | 95.0        | 0.250 | 88.0     | 0.400 | 71.0     | 0.039 | <0.4>             |       |
| 65 × 50      | KR4-656-M3.7 | 3.7           | 3     | 0.250 | 39.5        | 0.500 | 29.5     | 0.710 | 15.5     | 0.22  | <2.2>             |       |
|              | KR4-656-M5.5 | 5.5           | 3     | 0.250 | 54.5        | 0.500 | 43.0     | 0.710 | 26.5     | 0.14  | <1.4>             |       |
|              | KR4-656-M7.5 | 7.5           | 3     | 0.250 | 67.0        | 0.500 | 58.0     | 0.800 | 33.0     | 0.14  | <1.4>             |       |

# KR<sub>5</sub>-C Dimensions



Mating flange for KR<sub>5</sub>-C & KR4-M

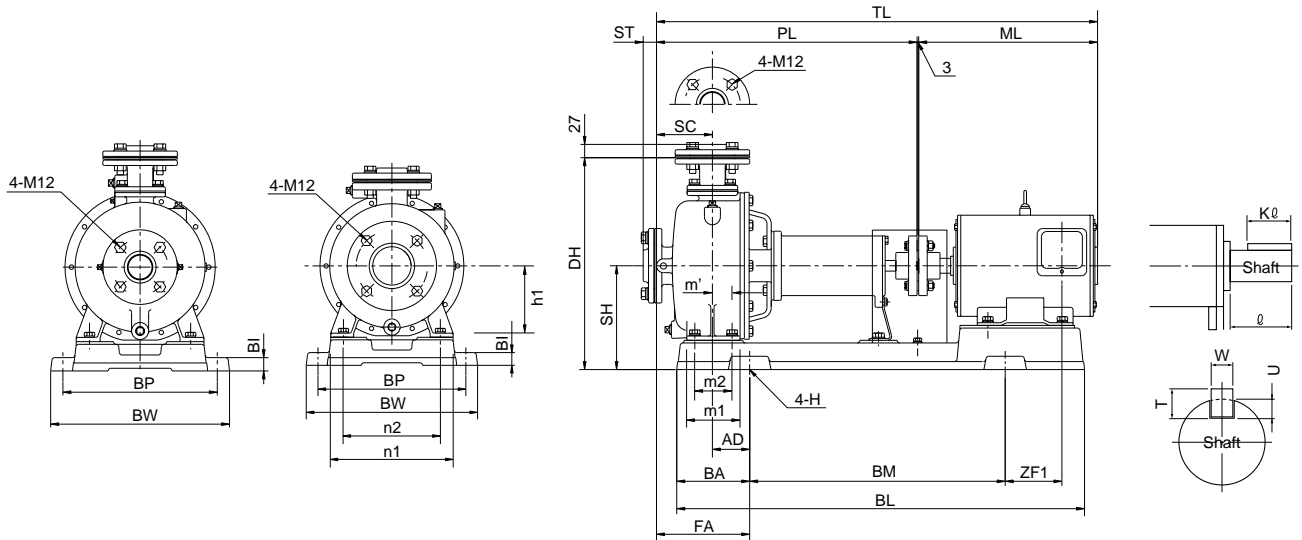
| Nominal diameter | d       | C   | D   | t  | f | n | h        |
|------------------|---------|-----|-----|----|---|---|----------|
| 32mm             | PT1 1/4 | 100 | 135 | 12 | 2 | 4 | 15 (M12) |
| 40mm             | PT1 1/2 | 105 | 140 | 12 | 2 | 4 | 15 (M12) |
| 50mm             | PT2     | 120 | 155 | 14 | 2 | 4 | 15 (M12) |
| 65mm             | PT2 1/2 | 140 | 175 | 15 | 2 | 4 | 15 (M12) |



Unit : mm

| Hz | Bore (mm)    | Model            | Motor kW     | Base |     |     |     |     | Combination |     |     |     |     | Weight kgs |    |
|----|--------------|------------------|--------------|------|-----|-----|-----|-----|-------------|-----|-----|-----|-----|------------|----|
|    |              |                  |              | BL   | BA  | BM  | BP  | BW  | DH          | SH  | TL  | AD  | FA  |            |    |
| 50 | 40 × 40      | KR4-405-CN0.75   | 0.75         | 340  | 70  | 200 | 230 | 260 | 332         | 148 | 388 | 27  | 87  | 32         |    |
|    |              | KR4-405-CN1.1    | 1.1          | 340  | 70  | 200 | 230 | 260 | 332         | 148 | 416 | 27  | 87  | 35         |    |
|    |              | KR5-405-C1.5     | 1.5          | 340  | 70  | 200 | 230 | 260 | 332         | 148 | 416 | 27  | 87  | 35         |    |
|    |              | KR5-405-C2.2     | 2.2          | 340  | 70  | 200 | 230 | 260 | 332         | 148 | 499 | 27  | 129 | 39         |    |
|    |              | KR5-405-C3.7     | 3.7          | 410  | 80  | 250 | 280 | 314 | 375         | 173 | 514 | 22  | 127 | 59         |    |
|    |              | KR5-405-C5.5     | 5.5          | 410  | 80  | 250 | 280 | 314 | 375         | 173 | 533 | 22  | 127 | 75         |    |
|    | 50 × 40      | KR5-505-C1.5     | 1.5          | 340  | 70  | 200 | 230 | 260 | 332         | 148 | 416 | 27  | 87  | 36         |    |
|    |              | KR5-505-C2.2     | 2.2          | 340  | 70  | 200 | 230 | 260 | 332         | 148 | 499 | 27  | 129 | 42         |    |
|    |              | KR5-505-C3.7     | 3.7          | 340  | 70  | 200 | 230 | 260 | 332         | 148 | 510 | 27  | 129 | 50         |    |
|    |              | KR5-505-C5.5     | 5.5          | 410  | 80  | 250 | 280 | 314 | 375         | 173 | 533 | 22  | 127 | 75         |    |
|    |              | 65 × 50          | KR5-655-C3.7 | 3.7  | 410 | 80  | 250 | 280 | 314         | 338 | 173 | 494 | 20  | 120        | 57 |
|    |              |                  | KR5-655-C5.5 | 5.5  | 410 | 80  | 250 | 280 | 314         | 383 | 193 | 513 | 20  | 120        | 75 |
| 60 | 32 × 40      | KR5-655-C7.5     | 7.5          | 410  | 80  | 250 | 280 | 314 | 383         | 193 | 586 | 20  | 120 | 92         |    |
|    |              | KR4-326-CN0.4S   | 0.4          | 340  | 70  | 200 | 230 | 260 | 332         | 148 | 419 | 27  | 99  | 29         |    |
|    | 40 × 40      | KR4-326-CN0.75S2 | 0.75         | 340  | 70  | 200 | 230 | 260 | 332         | 148 | 465 | 27  | 99  | 33         |    |
|    |              | KR4-406-CN0.75   | 0.75         | 340  | 70  | 200 | 230 | 260 | 332         | 148 | 388 | 27  | 87  | 32         |    |
|    |              | KR4-406-CN1.1    | 1.1          | 340  | 70  | 200 | 230 | 260 | 332         | 148 | 416 | 27  | 87  | 35         |    |
|    |              | KR5-406-C1.5     | 1.5          | 340  | 70  | 200 | 230 | 260 | 332         | 148 | 416 | 27  | 87  | 35         |    |
|    |              | KR5-406-C2.2     | 2.2          | 340  | 70  | 200 | 230 | 260 | 332         | 148 | 499 | 27  | 129 | 39         |    |
|    |              | KR5-406-C3.7     | 3.7          | 340  | 70  | 200 | 230 | 260 | 332         | 148 | 510 | 27  | 129 | 50         |    |
|    |              | KR5-406-C5.5     | 5.5          | 410  | 80  | 250 | 280 | 314 | 375         | 173 | 533 | 22  | 127 | 59         |    |
|    |              | 50 × 40          | KR5-506-C1.5 | 1.5  | 340 | 70  | 200 | 230 | 260         | 332 | 148 | 416 | 27  | 87         | 36 |
|    |              |                  | KR5-506-C2.2 | 2.2  | 340 | 70  | 200 | 230 | 260         | 332 | 148 | 457 | 27  | 87         | 41 |
|    |              |                  | KR5-506-C3.7 | 3.7  | 340 | 70  | 200 | 230 | 260         | 332 | 148 | 510 | 27  | 129        | 50 |
|    | KR5-506-C5.5 |                  | 5.5          | 410  | 80  | 250 | 280 | 314 | 375         | 173 | 533 | 22  | 127 | 75         |    |
|    | 65 × 50      | KR5-506-C7.5     | 7.5          | 410  | 80  | 250 | 280 | 314 | 375         | 173 | 606 | 22  | 127 | 75         |    |
|    |              | KR5-656-C3.7     | 3.7          | 410  | 80  | 250 | 280 | 314 | 338         | 173 | 494 | 20  | 120 | 57         |    |
|    |              | KR5-656-C5.5     | 5.5          | 410  | 80  | 250 | 280 | 314 | 383         | 193 | 513 | 20  | 120 | 75         |    |
|    |              | KR5-656-C7.5     | 7.5          | 410  | 80  | 250 | 280 | 314 | 383         | 193 | 586 | 20  | 120 | 92         |    |

# KR4-M Dimensions



Unit : mm

| Hz | Bore (mm) | Model         | Motor kW | Pump |     |     |     |     |     |    |    | Shaft |    |     | Key |   |   |
|----|-----------|---------------|----------|------|-----|-----|-----|-----|-----|----|----|-------|----|-----|-----|---|---|
|    |           |               |          | SC   | PL  | h1  | n1  | n2  | m1  | m2 | m' | Dia   | Sl | U   | K1  | W | T |
| 50 | 32 × 40   | KR4-325-M0.75 | 0.75     | 72   | 348 | 125 | 200 | 160 | 80  | 50 | 27 | 19    | 28 | 3.5 | 20  | 6 | 6 |
|    |           | KR4-325-M1.5  | 1.5      | 105  | 506 | 125 | 200 | 160 | 80  | 50 | 27 | 19    | 40 | 3.5 | 32  | 6 | 6 |
|    | 40 × 40   | KR4-405-M1.5  | 1.5      | 60   | 444 | 125 | 200 | 160 | 80  | 50 | 27 | 19    | 40 | 3.5 | 32  | 6 | 6 |
|    |           | KR4-405-M2.2  | 2.2      | 102  | 444 | 125 | 200 | 160 | 80  | 50 | 27 | 19    | 40 | 3.5 | 32  | 6 | 6 |
|    |           | KR4-405-M3.7  | 3.7      | 105  | 490 | 140 | 240 | 190 | 100 | 70 | 37 | 19    | 40 | 3.5 | 32  | 6 | 6 |
|    |           | KR4-405-M5.5  | 5.5      | 105  | 480 | 140 | 240 | 190 | 100 | 70 | 37 | 24    | 40 | 3.5 | 32  | 8 | 7 |
|    | 50 × 40   | KR4-505-M2.2  | 2.2      | 102  | 486 | 125 | 200 | 160 | 80  | 50 | 27 | 19    | 40 | 3.5 | 32  | 6 | 6 |
|    |           | KR4-505-M3.7  | 3.7      | 102  | 486 | 125 | 200 | 160 | 80  | 50 | 27 | 19    | 40 | 3.5 | 32  | 6 | 6 |
|    | 65 × 50   | KR4-505-M5.5  | 5.5      | 105  | 480 | 140 | 240 | 190 | 100 | 70 | 37 | 24    | 40 | 4   | 32  | 8 | 7 |
|    |           | KR4-655-M3.7  | 3.7      | 100  | 470 | 140 | 240 | 190 | 100 | 70 | 35 | 19    | 40 | 3.5 | 32  | 6 | 6 |
|    |           | KR4-655-M5.5  | 5.5      | 100  | 460 | 160 | 240 | 190 | 100 | 70 | 35 | 24    | 40 | 4   | 32  | 8 | 7 |
|    |           | KR4-655-M7.5  | 7.5      | 100  | 460 | 160 | 240 | 190 | 100 | 70 | 35 | 24    | 40 | 4   | 32  | 8 | 7 |
| 60 | 32 × 40   | KR4-326-M0.75 | 0.75     | 72   | 348 | 125 | 200 | 160 | 80  | 50 | 27 | 19    | 28 | 3.5 | 20  | 6 | 6 |
|    |           | KR4-326-M1.5  | 1.5      | 102  | 478 | 125 | 200 | 160 | 80  | 50 | 27 | 19    | 40 | 3.5 | 32  | 6 | 6 |
|    | 40 × 40   | KR4-406-M1.5  | 1.5      | 60   | 444 | 125 | 200 | 160 | 80  | 50 | 27 | 19    | 40 | 3.5 | 32  | 6 | 6 |
|    |           | KR4-406-M2.2  | 2.2      | 102  | 486 | 125 | 200 | 160 | 80  | 50 | 27 | 19    | 40 | 3.5 | 32  | 6 | 6 |
|    |           | KR4-406-M3.7  | 3.7      | 102  | 486 | 125 | 200 | 160 | 80  | 50 | 27 | 19    | 40 | 3.5 | 32  | 6 | 6 |
|    |           | KR4-406-M5.5  | 5.5      | 105  | 480 | 140 | 240 | 190 | 100 | 70 | 37 | 24    | 40 | 4   | 32  | 8 | 7 |
|    | 50 × 40   | KR4-506-M2.2  | 2.2      | 60   | 444 | 125 | 200 | 160 | 80  | 50 | 27 | 19    | 40 | 3.5 | 32  | 6 | 6 |
|    |           | KR4-506-M3.7  | 3.7      | 102  | 486 | 125 | 200 | 160 | 80  | 50 | 27 | 19    | 40 | 3.5 | 32  | 6 | 6 |
|    | 65 × 50   | KR4-506-M5.5  | 5.5      | 105  | 480 | 140 | 240 | 190 | 100 | 70 | 37 | 24    | 40 | 4   | 32  | 8 | 7 |
|    |           | KR4-506-M7.5  | 7.5      | 105  | 480 | 140 | 240 | 190 | 100 | 70 | 37 | 24    | 40 | 4   | 32  | 8 | 7 |
|    |           | KR4-656-M3.7  | 3.7      | 100  | 470 | 140 | 240 | 190 | 100 | 70 | 35 | 19    | 40 | 3.5 | 32  | 6 | 6 |
|    |           | KR4-656-M5.5  | 5.5      | 100  | 460 | 160 | 240 | 190 | 100 | 70 | 35 | 24    | 40 | 4   | 32  | 8 | 7 |
|    |           | KR4-656-M7.5  | 7.5      | 100  | 460 | 160 | 240 | 190 | 100 | 70 | 35 | 24    | 40 | 4   | 32  | 8 | 7 |

| Hz | Bore (mm) | Model         | Base |     |     |     |     |     | Combination |     |     |    |     |     |     |     | Weight kgs |     |
|----|-----------|---------------|------|-----|-----|-----|-----|-----|-------------|-----|-----|----|-----|-----|-----|-----|------------|-----|
|    |           |               | BI   | BL  | BA  | BM  | BP  | BW  | DH          | SH  | TL  | AD | FA  | ML  | ZH  | ZF1 |            | ZF2 |
| 50 | 32 × 40   | KR4-325-M0.75 | 20   | 591 | 152 | 265 | 280 | 316 | 363         | 178 | 586 | 80 | 152 | 235 | 161 | 115 | 25         | 46  |
|    |           | KR4-325-M1.5  | 25   | 766 | 137 | 480 | 290 | 336 | 365         | 180 | 790 | 70 | 175 | 281 | 166 | 76  | 17         | 64  |
|    | 40 × 40   | KR4-405-M1.5  | 25   | 766 | 137 | 480 | 290 | 336 | 365         | 180 | 770 | 70 | 172 | 281 | 166 | 59  | 17         | 67  |
|    |           | KR4-405-M2.2  | 25   | 766 | 137 | 480 | 290 | 336 | 398         | 195 | 829 | 70 | 175 | 336 | 184 | 107 | 6          | 84  |
|    |           | KR4-405-M3.7  | 25   | 766 | 137 | 480 | 290 | 336 | 428         | 225 | 875 | 70 | 175 | 392 | 211 | 82  | 28         | 101 |
|    |           | KR4-405-M5.5  | 25   | 819 | 138 | 540 | 350 | 396 | 428         | 225 | 875 | 70 | 175 | 392 | 211 | 82  | 28         | 101 |
|    | 50 × 40   | KR4-505-M2.2  | 25   | 766 | 137 | 480 | 290 | 336 | 365         | 180 | 770 | 70 | 172 | 281 | 166 | 59  | 17         | 70  |
|    |           | KR4-505-M3.7  | 25   | 766 | 137 | 480 | 290 | 336 | 380         | 195 | 825 | 70 | 172 | 336 | 184 | 106 | 6          | 79  |
|    | 65 × 50   | KR4-505-M5.5  | 25   | 819 | 138 | 540 | 350 | 396 | 428         | 225 | 875 | 70 | 175 | 392 | 211 | 82  | 28         | 101 |
|    |           | KR4-655-M3.7  | 25   | 766 | 137 | 480 | 290 | 336 | 360         | 195 | 809 | 70 | 170 | 336 | 184 | 92  | 6          | 86  |
|    |           | KR4-655-M5.5  | 25   | 819 | 138 | 540 | 350 | 396 | 415         | 225 | 855 | 70 | 170 | 392 | 211 | 67  | 28         | 99  |
|    |           | KR4-655-M7.5  | 25   | 819 | 138 | 540 | 350 | 396 | 415         | 225 | 855 | 70 | 170 | 392 | 211 | 67  | 28         | 114 |
| 60 | 32 × 40   | KR4-326-M0.75 | 20   | 591 | 152 | 265 | 280 | 316 | 363         | 178 | 586 | 80 | 152 | 235 | 161 | 115 | 25         | 46  |
|    |           | KR4-326-M1.5  | 25   | 766 | 137 | 480 | 290 | 336 | 365         | 180 | 762 | 70 | 172 | 281 | 166 | 51  | 17         | 63  |
|    | 40 × 40   | KR4-406-M1.5  | 25   | 766 | 137 | 480 | 290 | 336 | 365         | 180 | 728 | 70 | 130 | 281 | 166 | 59  | 17         | 65  |
|    |           | KR4-406-M2.2  | 25   | 766 | 137 | 480 | 290 | 336 | 365         | 180 | 728 | 70 | 130 | 281 | 166 | 59  | 17         | 67  |
|    |           | KR4-406-M3.7  | 25   | 766 | 137 | 480 | 290 | 336 | 380         | 195 | 825 | 70 | 172 | 336 | 184 | 106 | 6          | 79  |
|    |           | KR4-406-M5.5  | 25   | 819 | 138 | 540 | 350 | 396 | 428         | 225 | 875 | 70 | 175 | 392 | 211 | 82  | 28         | 101 |
|    | 50 × 40   | KR4-506-M2.2  | 25   | 766 | 137 | 480 | 290 | 336 | 365         | 180 | 770 | 70 | 172 | 281 | 166 | 59  | 17         | 69  |
|    |           | KR4-506-M3.7  | 25   | 766 | 137 | 480 | 290 | 336 | 380         | 195 | 825 | 70 | 172 | 336 | 184 | 106 | 6          | 79  |
|    | 65 × 50   | KR4-506-M5.5  | 25   | 819 | 138 | 540 | 350 | 396 | 428         | 225 | 875 | 70 | 175 | 392 | 211 | 82  | 28         | 101 |
|    |           | KR4-506-M7.5  | 25   | 819 | 138 | 540 | 350 | 396 | 428         | 225 | 875 | 70 | 175 | 392 | 211 | 82  | 28         | 115 |
|    |           | KR4-656-M3.7  | 25   | 766 | 137 | 480 | 290 | 336 | 360         | 195 | 809 | 70 | 170 | 336 | 184 | 92  | 6          | 85  |
|    |           | KR4-656-M5.5  | 25   | 819 | 138 | 540 | 350 | 396 | 415         | 225 | 855 | 70 | 170 | 392 | 211 | 67  | 28         | 99  |
|    |           | KR4-656-M7.5  | 25   | 819 | 138 | 540 | 350 | 396 | 415         | 225 | 855 | 70 | 170 | 392 | 211 | 67  | 28         | 114 |

# Pump Data

## KR<sup>4</sup>-C

| Hz           | Bore (mm)    | Model            | Impeller Material | Mechanical Seal Size (mm) | Foundation bolt Size (mm) | Applicable vibration isolator (*2) | Motor                 |                        |                |                  |                  |
|--------------|--------------|------------------|-------------------|---------------------------|---------------------------|------------------------------------|-----------------------|------------------------|----------------|------------------|------------------|
|              |              |                  |                   |                           |                           |                                    | Bearing No. (Inboard) | Bearing No. (Outboard) | Efficiency (%) | Power factor (%) | Insulation class |
| 50           | 40×40        | KR4-405-CN0.75   | Resin             | 20EA560-20J               | M10×125                   | PXG-60                             | 6305ZZC3              | 6303ZZC3               | 80.2           | 85.7             | F                |
|              |              | KR4-405-CN1.1    | Resin (*1)        | 20EA560-20J               | M10×125                   | PXG-60                             | 6306ZZC3              | 6303ZZC3               | 80.9           | 83.5             | F                |
|              |              | KR5-405-C1.5     | Resin (*1)        | 20EA560-20J               | M10×125                   | PXG-60                             | 6306ZZC3              | 6303ZZC3               | 85             | 86.6             | F                |
|              |              | KR5-405-C2.2     | Resin (*1)        | 20EA560-20J               | M10×125                   | PXG-60                             | 6307ZZC3              | 6205ZZC3               | 85.1           | 88.1             | F                |
|              |              | KR5-405-C3.7     | Resin (*1)        | 20EA560-20J               | M10×125                   | PXG-60                             | 6307ZZC3              | 6205ZZC3               | 87.7           | 88.1             | F                |
|              | KR5-405-C5.5 | BC6              | 25EA560-25J       | M12×160                   | PXG-60                    | 6309ZZC3                           | 6206ZZC3              | 87                     | 89.8           | F                |                  |
|              | 50×40        | KR5-505-C1.5     | Resin (*1)        | 20EA560-20J               | M10×125                   | PXG-60                             | 6306ZZC3              | 6303ZZC3               | 85             | 86.6             | F                |
|              |              | KR5-505-C2.2     | Resin (*1)        | 20EA560-20J               | M10×125                   | PXG-60                             | 6307ZZC3              | 6205ZZC3               | 85.1           | 88.1             | F                |
|              |              | KR5-505-C3.7     | Resin (*1)        | 20EA560-20J               | M10×125                   | PXG-60                             | 6307ZZC3              | 6205ZZC3               | 87.7           | 88.1             | F                |
|              | 65×50        | KR5-505-C5.5     | BC6               | 25EA560-25J               | M12×160                   | PXG-60                             | 6309ZZC3              | 6206ZZC3               | 87             | 89.8             | F                |
|              |              | KR5-655-C3.7     | BC6               | 20EA560-20J               | M10×125                   | PXG-60                             | 6307ZZC3              | 6205ZZC3               | 87.7           | 88.1             | F                |
|              |              | KR5-655-C5.5     | BC6               | 25EA560-25J               | M12×160                   | PXG-60                             | 6309ZZC3              | 6206ZZC3               | 87             | 88.1             | F                |
| 60           | 32×40        | KR4-326-CN0.4S   | Resin             | 20EA560-20J               | M10×125                   | PXG-60                             | 6305ZZC3              | 6303ZZC3               | 63.9           | 97.1             | F                |
|              |              | KR4-326-CN0.75S2 | Resin             | 20EA560-20J               | M10×125                   | PXG-60                             | 6306ZZC3              | 6303ZZC3               | 72.4           | 99.5             | F                |
|              | 40×40        | KR4-406-CN0.75   | Resin             | 20EA560-20J               | M10×125                   | PXG-60                             | 6305ZZC3              | 6303ZZC3               | 79.4           | 89.4             | F                |
|              |              | KR4-406-CN1.1    | Resin (*1)        | 20EA560-20J               | M10×125                   | PXG-60                             | 6306ZZC3              | 6303ZZC3               | 82.7           | 88.9             | F                |
|              |              | KR5-406-C1.5     | Resin (*1)        | 20EA560-20J               | M10×125                   | PXG-60                             | 6306ZZC3              | 6303ZZC3               | 84.6           | 91.8             | F                |
|              |              | KR5-406-C2.2     | Resin (*1)        | 20EA560-20J               | M10×125                   | PXG-60                             | 6307ZZC3              | 6305ZZC3               | 83.9           | 92.3             | F                |
|              |              | KR5-406-C3.7     | Resin (*1)        | 20EA560-20J               | M10×125                   | PXG-60                             | 6307ZZC3              | 6305ZZC3               | 87.4           | 92.7             | F                |
|              | 50×40        | KR5-406-C5.5     | BC6               | 25EA560-25J               | M12×160                   | PXG-60                             | 6309ZZC3              | 6306ZZC3               | 86.8           | 93.6             | F                |
|              |              | KR5-506-C1.5     | Resin (*1)        | 20EA560-20J               | M10×125                   | PXG-60                             | 6306ZZC3              | 6303ZZC3               | 84.6           | 91.8             | F                |
|              |              | KR5-506-C2.2     | Resin (*1)        | 20EA560-20J               | M10×125                   | PXG-60                             | 6307ZZC3              | 6205ZZC3               | 83.9           | 92.3             | F                |
|              | 65×50        | KR5-506-C3.7     | Resin (*1)        | 20EA560-20J               | M10×125                   | PXG-60                             | 6307ZZC3              | 6205ZZC3               | 87.4           | 92.7             | F                |
|              |              | KR5-506-C5.5     | BC6               | 25EA560-25J               | M12×160                   | PXG-60                             | 6309ZZC3              | 6206ZZC3               | 86.8           | 93.6             | F                |
| KR5-506-C7.5 |              | BC6              | 25EA560-25J       | M12×160                   | PXG-60                    | 6310ZZC3                           | 6207ZZC3              | 87.8                   | 90.5           | F                |                  |
| KR5-656-C3.7 |              | BC6              | 20EA560-20J       | M10×125                   | PXG-60                    | 6307ZZC3                           | 6205ZZC3              | 87.4                   | 92.7           | F                |                  |
| KR5-656-C5.5 |              | BC6              | 25EA560-25J       | M12×160                   | PXG-60                    | 6309ZZC3                           | 6206ZZC3              | 86.8                   | 93.6           | F                |                  |
| KR5-656-C7.5 | BC6          | 25EA560-25J      | M12×160           | PXG-60                    | 6307ZZC3                  | 6205ZZC3                           | 87.8                  | 90.5                   | F              |                  |                  |

## KR-M

| Hz            | Bore (mm)    | Model         | Impeller Mechanical | Mechanical Seal Size (mm) | Bearing No.        |                      | Foundation bolt size (*2) | Applicable vibration isolator (*2) | Shaft Coupling Size |
|---------------|--------------|---------------|---------------------|---------------------------|--------------------|----------------------|---------------------------|------------------------------------|---------------------|
|               |              |               |                     |                           | Pump end (Inboard) | Motor end (Outboard) |                           |                                    |                     |
| 50            | 32×40        | KR4-325-M0.75 | Resin               | 20EA560-20J               | 6305ZZ             | 6305ZZ               | M12×160                   | PX-75Z                             | JIS-90              |
|               |              | KR4-325-M1.5  | Resin (*1)          | 20EA560-20J               | 6307ZZ             | 6307ZZ               | M12×200                   | PX-95Z                             | JIS-100             |
|               | 40×40        | KR4-405-M1.5  | Resin (*1)          | 20EA560-20J               | 6307ZZ             | 6307ZZ               | M16×200                   | PX-95Z                             | JIS-100             |
|               |              | KR4-405-M2.2  | Resin (*1)          | 20EA560-20J               | 6307ZZ             | 6307ZZ               | M16×200                   | PX-95Z                             | JIS-100             |
|               |              | KR4-405-M3.7  | Resin (*1)          | 20EA560-20J               | 6307ZZ             | 6307ZZ               | M16×200                   | PX-95Z                             | JIS-112             |
|               | 50×40        | KR4-405-M5.5  | BC6                 | 20EA560-25J               | 6307ZZ             | 6310ZZ               | M16×200                   | PX-95Z                             | JIS-125             |
|               |              | KR4-505-M2.2  | Resin (*1)          | 20EA560-20J               | 6307ZZ             | 6307ZZ               | M16×200                   | PX-95Z                             | JIS-100             |
|               |              | KR4-505-M3.7  | Resin (*1)          | 20EA560-20J               | 6307ZZ             | 6307ZZ               | M16×200                   | PX-95Z                             | JIS-112             |
|               | 65×50        | KR4-505-M5.5  | BC6                 | 20EA560-25J               | 6307ZZ             | 6310ZZ               | M16×200                   | PX-95Z                             | JIS-125             |
|               |              | KR4-655-M3.7  | BC6                 | 20EA560-20J               | 6307ZZ             | 6307ZZ               | M16×200                   | PX-95Z                             | JIS-112             |
|               |              | KR4-655-M5.5  | BC6                 | 25EA560-25J               | 6307ZZ             | 6310ZZ               | M16×200                   | PX-95Z                             | JIS-125             |
|               | 60           | 32×40         | KR4-655-M7.5        | BC6                       | 25EA560-25J        | 6307ZZ               | 6310ZZ                    | M16×200                            | PX-95Z              |
| KR4-326-M0.75 |              |               | Resin               | 20EA560-20J               | 6305ZZ             | 6305ZZ               | M12×160                   | PX-75Z                             | JIS-90              |
| 40×40         |              | KR4-326-M1.5  | Resin (*1)          | 20EA560-20J               | 6307ZZ             | 6307ZZ               | M12×200                   | PX-95Z                             | JIS-100             |
|               |              | KR4-406-M1.5  | Resin (*1)          | 20EA560-20J               | 6307ZZ             | 6307ZZ               | M16×200                   | PX-95Z                             | JIS-100             |
|               |              | KR4-406-M2.2  | Resin (*1)          | 20EA560-20J               | 6307ZZ             | 6307ZZ               | M16×200                   | PX-95Z                             | JIS-100             |
|               |              | KR4-406-M3.7  | Resin (*1)          | 20EA560-20J               | 6307ZZ             | 6307ZZ               | M16×200                   | PX-95Z                             | JIS-112             |
|               |              | KR4-406-M5.5  | BC6                 | 25EA560-25J               | 6307ZZ             | 6310ZZ               | M16×200                   | PX-95Z                             | JIS-125             |
| 50×40         |              | KR4-506-M2.2  | Resin (*1)          | 20EA560-20J               | 6307ZZ             | 6307ZZ               | M16×200                   | PX-95Z                             | JIS-100             |
|               |              | KR4-506-M3.7  | Resin (*1)          | 20EA560-20J               | 6307ZZ             | 6307ZZ               | M16×200                   | PX-95Z                             | JIS-112             |
|               |              | KR4-506-M5.5  | BC6                 | 25EA560-25J               | 6307ZZ             | 6310ZZ               | M16×200                   | PX-95Z                             | JIS-125             |
| 65×50         |              | KR4-506-M7.5  | BC6                 | 25EA560-25J               | 6307ZZ             | 6310ZZ               | M16×200                   | PX-95Z                             | JIS-125             |
|               |              | KR4-656-M3.7  | BC6                 | 20EA560-20J               | 6307ZZ             | 6307ZZ               | M16×200                   | PX-95Z                             | JIS-112             |
|               | KR4-656-M5.5 | BC6           | 25EA560-25J         | 6307ZZ                    | 6310ZZ             | M16×200              | PX-95Z                    | JIS-125                            |                     |
| KR4-656-M7.5  | BC6          | 25EA560-25J   | 6307ZZ              | 6310ZZ                    | M16×200            | PX-95Z               | JIS-125                   |                                    |                     |

(\*1):BC6 is available upon request. (\*2):Optional accessory upon request.

Distributor

**KAWAMOTO PUMP MFG. CO.,LTD.**

11, Ohsu 4-Chome, Naka-Ku, Nagoya, Japan

Printed in Japan

|      |            |
|------|------------|
| Kind | KR-C·M-ENG |
| No.  | 53-07-10-S |
| Ed.  | 1          |