

INVERTER HOME PUMP [KAWA-ACE]® NF3 TYPE

SAVE ENERGY

SILENT

STAINLESS

Ver.1.6

High Efficiency | Low Noise | Saving Energy

TRIPLE
No.1



STAINLESS & **INVERTER**

NF3-A・P



Alternate • Parallel

HIGH TECHNOLOGY HOME PUMP

High Quality • Stainless pump

TRIPLE No.1



1. HIGH EFFICIENCY

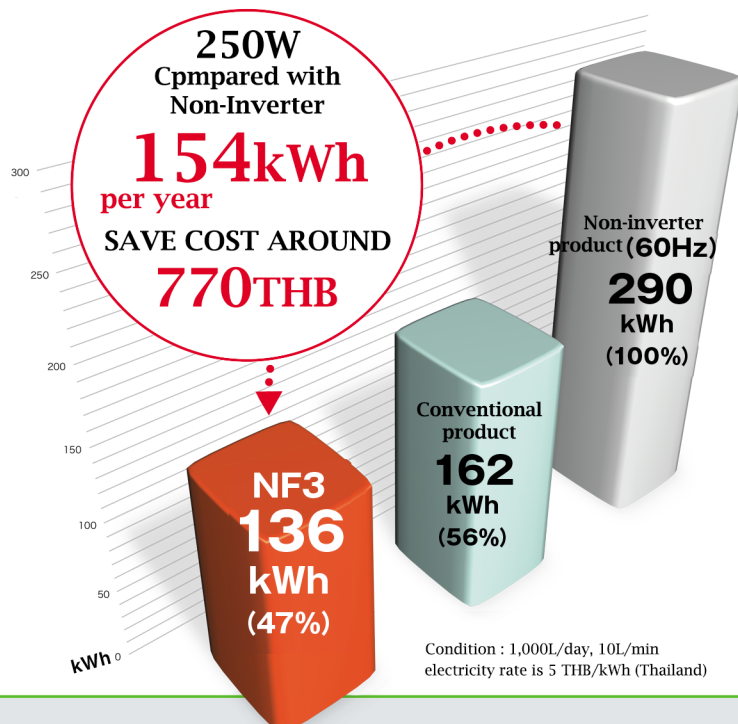
- High Pump Efficiency by unique internal structure
- High motor Efficiency by IE5 class motor



ENERGY SAVING 53% Compared with Non-Inverter pumps

Compare to conventional NF2, maximum overall efficiency is 4% higher

Helping reduce your expenses with high efficiency and energy savings



Save more over
1 month's electricity
cost in **1 year**



The average monthly electricity cost is based on a Japanese government report.

NF3 model

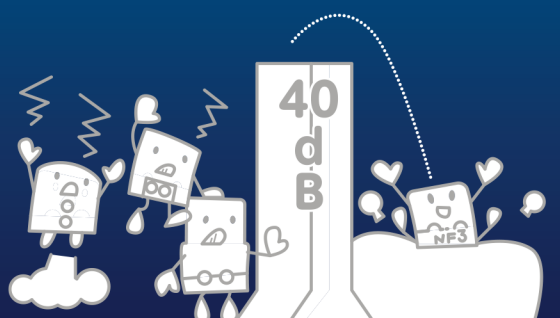


2. SUPER LOW NOISE

SUPER LOW NOISE

NOISE Level
36dB

Compare to conventional NF2, minus 6 dB



more than 40dB ← | → less than 40dB

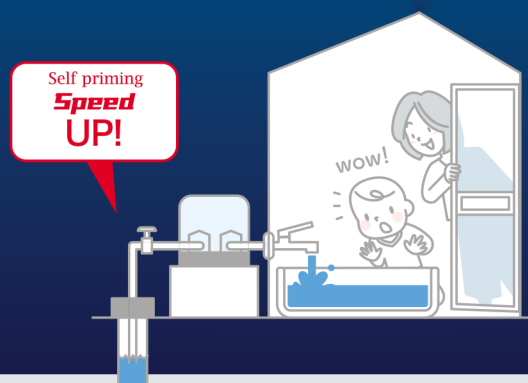
3. HIGH SPEED VACUUM

PUMP CHARACTERISTICS

Self-priming SPEED

30% Reduction

Self-priming speed up to 60 sec. faster than conventional NF2



INVERTER HOME PUMP [KAWA-ACE]® NF3 MODEL



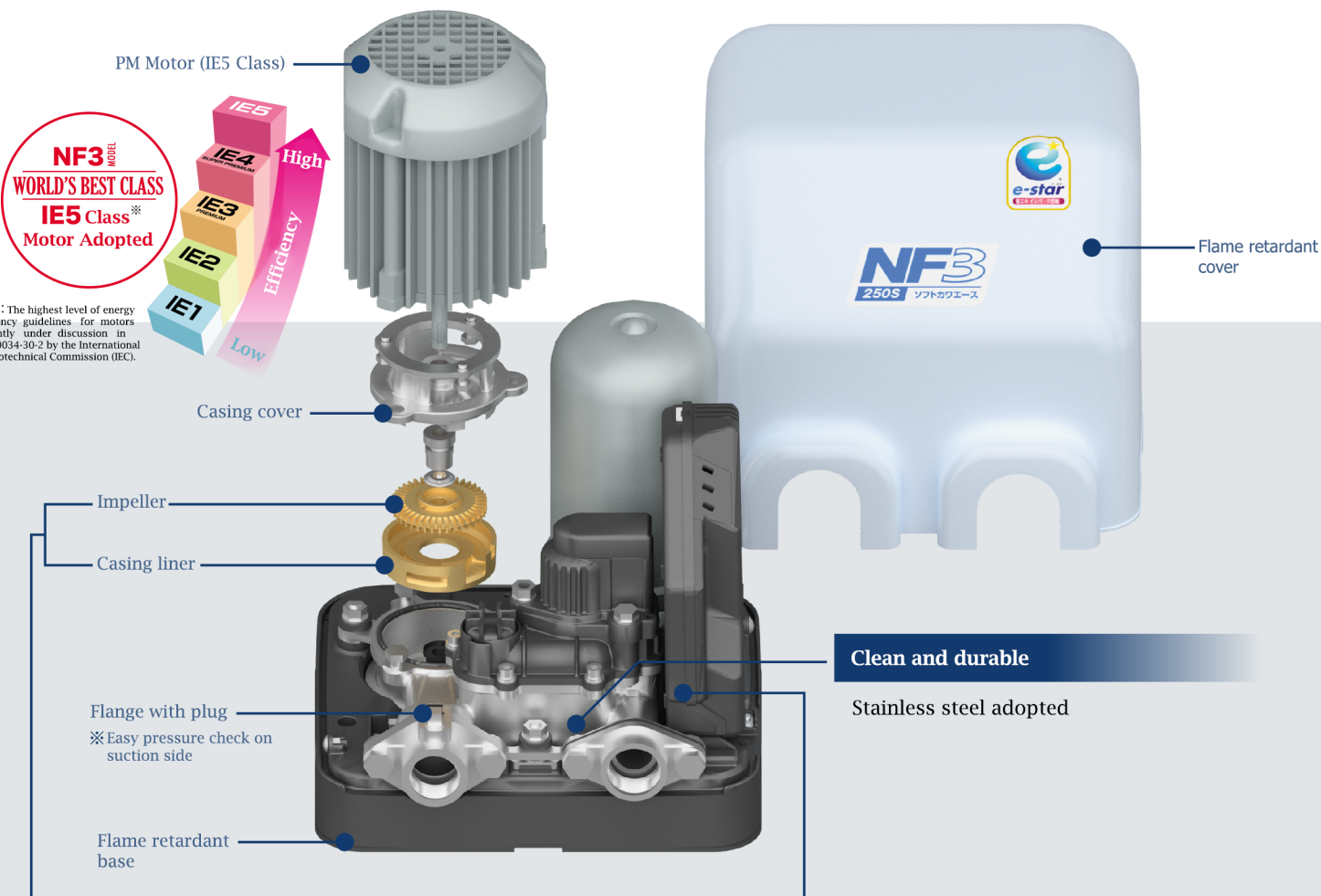
Standard specification

Control method	Constant discharge rate pressure ※1 water supply by frequency control
Operation method	Single, Alternate, Alternate/Parallel
Installation	Indoor/Outdoor (altitude : 1,000m or less)
Liquid	Clean water 0~40°C (no freezing)

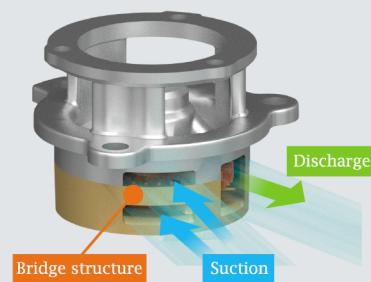
Materials	Cascade pump
	Impeller : CAC406
	Shaft : SUS304 (portion contacting liquid) Casing : SCS13
Motor	Kawamoto PM Motor (TEFC indoor) 4 poles 150W~750W

Suction total head	-8m※2 ~ +5m
Power supply	Single phase 100V (150W, 250W, 400W) Single phase 200V (400W, 750W) Three phase 200V (400W, 750W)
Cable	2m (single operation only)
Accessories	Ground wire, strainer, pump cover (color: baby blue)

Equipped with high-quality Functions, Safety, Reliability and Comfort for you

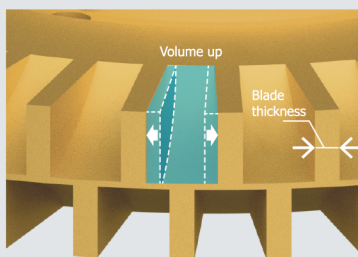


Features designed for high efficiency and energy saving



① Structure of Water Flow

The unique design enables smooth water flow inside the pump.



② Optimization of the impeller

By optimizing the shape and thickness of the blades, as well as reducing the gap, the water flow can be increased.

③ Minimizing Gap between impeller and Liner

Reducing the gap can minimize performance losses.



High Performance control Box



Information Display with 6-Color LED Light (PAT Pending)

The six colors (Red, Blue, Purple, Green, Yellow, White) indicate the pump's status.



Switch to Change Mode

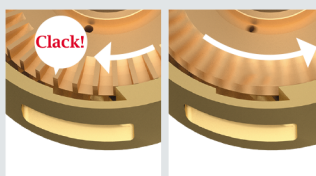
With just one switch, you can adjust the operating mode to match various uses.

E Mode (ECO)

By controlling the rotation speed, it can operate while saving energy.

S Mode (STRONG)

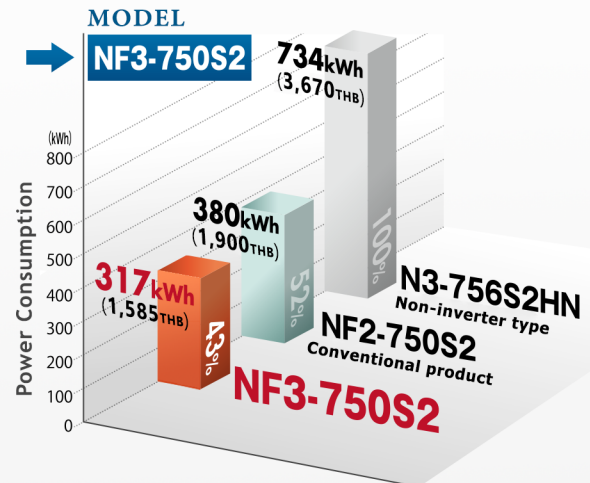
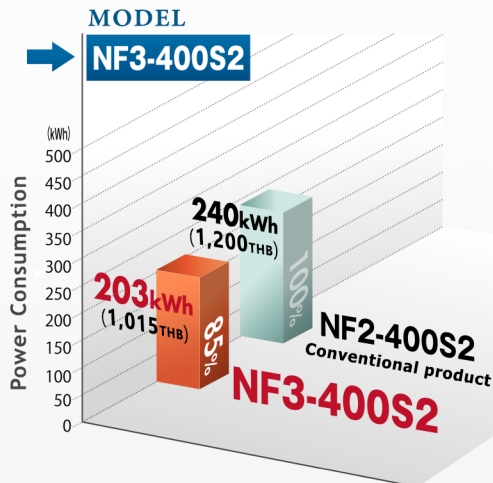
When high pressure is required, it provides a powerful water supply



Equipped with the function of impeller lock detection

Detects impeller lock, such as sand ingestion, and reverses the rotation of the impeller to protect the pump.

Comparison of Annual Power Consumption and Operating Costs



※ A simple calculation based on the conditions of 1,000L of daily water usage, 10L/min flow rate, and electricity rate 5 THB/kWh. (Thailand)

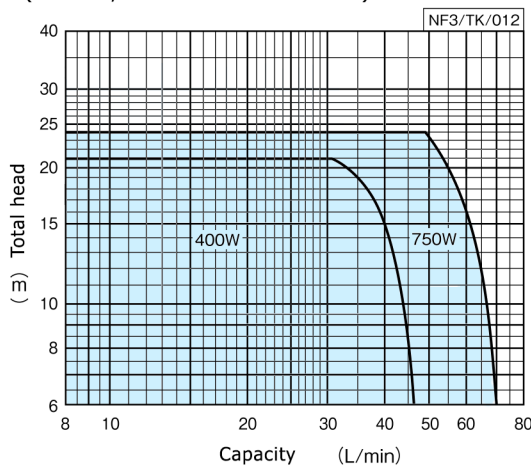
NF3 MODEL

For **SHALLOW WELL**
For **WATER TANK**

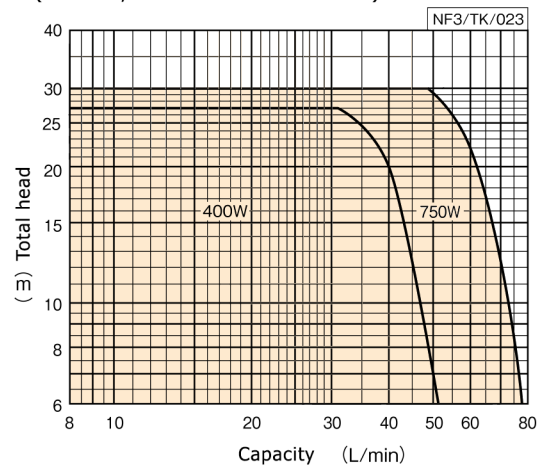
Selection Chart / Specification Table

SELECTION

- Well water sucking operation (E mode, total suction head -8m)



- Water tank sucking / pouring water operation (E mode, total suction head -2m)



SPECIFICATION TABLE

→ Total Suction head -8m • → Total Suction head -2m

Low water flow rate: 4L/min

Unit bore mm	Model	Motor W	Power Supply V	Standard specifications		E Mode operating		S Mode		Accumulator Capacity L	Total head at 12m L/min	Sound dB(A)
				Total head m	Capacity L/min	Operating head m	Capacity L/min	Starting ^{*1} Pressure m	Operating ^{*2} head m			
25	NF3-400S2	400	SINGLE PHASE 200	25	38	21	31	17	26	1	47	42~49
32	NF3-750S2	750	SINGLE PHASE 200	28	55	24	48	20	29.5	1	72	45~52
25	NF3-400S2	400	SINGLE PHASE 200	25	38	27	31	23	32	1	47	42~49
32	NF3-750S2	750	SINGLE PHASE 200	28	55	30	48	26	35.5	1	72	45~52

*1 The starting head is set for shallow wells (total suction head - 8m), and for water tanks (total suction head - 2m). When using, please adjust the starting head according to the purpose.

*2 Operating head (reference value) at a discharge rate of 10 L/min. In S mode, the operating head varies depending on the flow rate.

* When set to S mode, the discharge pressure will not be constant. Compared to E mode, power consumption will be higher at low water volume. (Factory setting is E mode.)

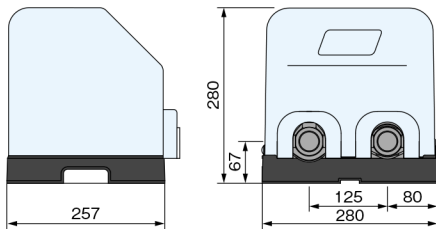
NF3 MODEL

Outside Dimension / Product Components

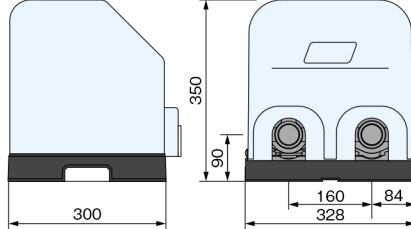
The pump diagram is a representative illustration and may vary depending on the model. When preparing the implementation plan, please request the delivery specification.

OUTSIDE DIMENSION

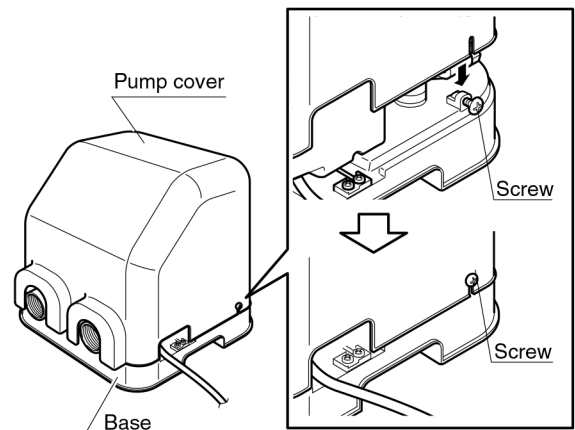
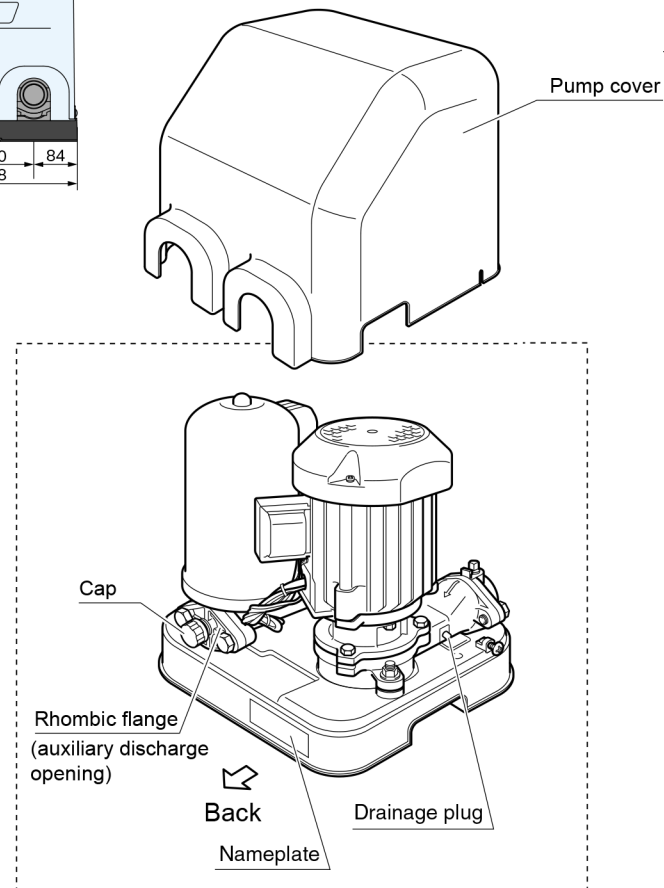
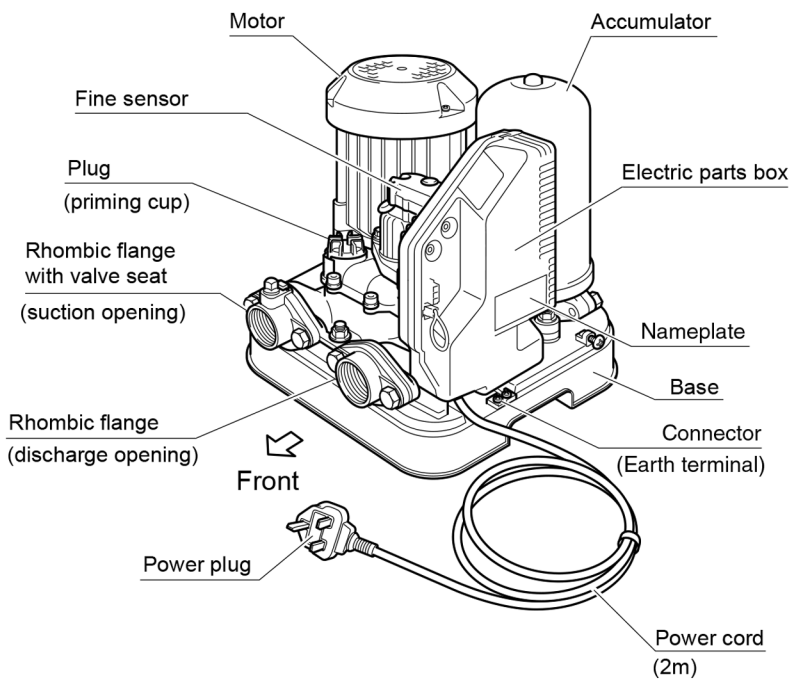
● 400W



● 750W



Overall view of product



■ WEIGHT

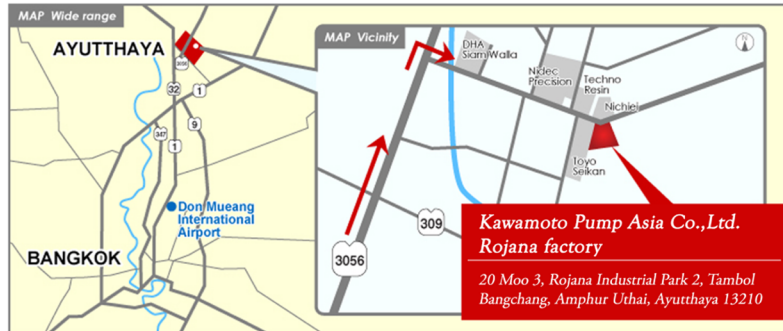
	400W	750W
Bore size (mm)	25	32
Weight (kg)	12.5	18

OUR COMPANY

Kawamoto Pump Asia Co., Ltd.

 THAILAND

Rojana Factory



Ayutthaya factory

Tel. 03-574-6860

Rojana Industrial Park 2, Ayutthaya

Bangkok Sales Office

Bangkok sales office

E-mail. kpa@kawamoto-pump.co.th

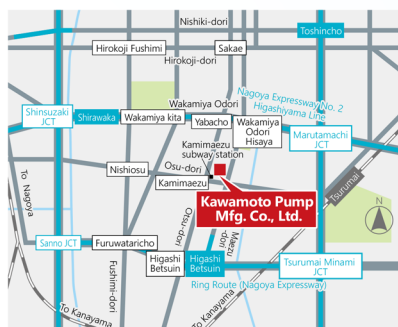
Tel. 02-024-6606



**Promphan building 3
7th Floor**

Kawamoto Pump Mfg. Co., Ltd.

 JAPAN



Located immediately outside No.10 exit of Kamimaezu subway station



20 minutes walk from Meitetsu Nagoya Main Line Uto station.
15 minutes by car from Shinjyo station.

Okazaki Factory

1, Goryoden, Hashime-cho, Okazaki, Aichi 444-8530 JAPAN

Phone: +81-564-31-4191



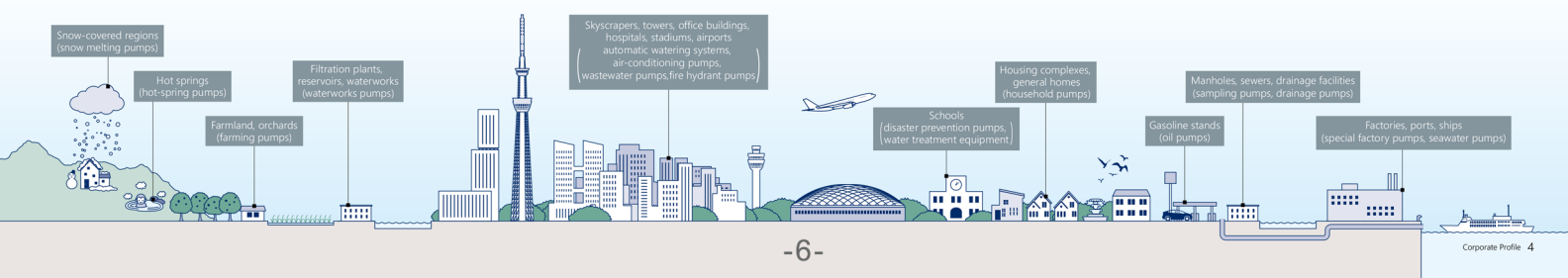
Head office

11-39, 4-chome, Ohsu, Naka-ku, Nagoya, Aichi 460-8650 JAPAN

Phone: +81-52-251-7173

Fax: +81-52-241-6151

URL: <http://www.kawamoto.co.jp/eng/>





Important Safety Precautions

Always read the manual thoroughly and fully comprehend the contents for safe operation before starting use. Precautions for using products safely and for preventing personal injuries or physical damage are given in the manual. ※We bear no responsibility when the above listed precautions are not observed.

- Matters falling under the following may not be covered by the warranty: uses out of the specified scope of application, failure to comply with precautions, improper repairs and alterations, matters arising from natural disasters, matters arising from the installation environment (improper power source, foreign objects, sand etc.), non-compliance with laws and regulations or standards pertaining thereto, accidental or intentional damage or injury, replacement of consumable parts, defects due to resale, etc.
- Do not use the product for applications out of the product specifications. Doing so may cause electric shock, fire, water leakage, etc.
- Have spare equipment ready when using pumps for equipment for living things (fish farms, fish tanks, aquariums, etc.) or critical equipment.
- Pump failure may cause lack of oxygen and water quality deterioration, and may affect the lives of the living things.
When using pumps for equipment for living things (fish farms, fish tanks, aquariums, etc.), do not install the pump in the tank where the living things are put into. The current leakage or sealing liquid leak from the mechanical seal may cause the death of the living things.
- If used to transport food-related items, give due consideration to the materials used. Contamination by foreign objects may occur.
- Avoid using for living things which disagrees with copper alloy. It may affect the lives of the living things.
- Select a product which is appropriate for your application. Inappropriate use of products may cause accidents.
- Conduct construction in accordance with the applicable laws and regulations (the Technical Standards of Electric Installation, interior wiring regulation, Building Standards Act, Water Supply Law, etc.). Not only does it violate the laws and regulations, but it also may cause injuries due to electric shock, fire, falling and tipping over.
- Do not use in places where people are assumed to get in contact with the product (baths, pools, lakes, etc.). Electric leak may occur and cause electric shock.
- Depending on the equipment, attach a filter etc. appropriate for your application on the discharge side before use, perform thorough flushing to check that there is no contamination. Cutting oil, rubber mold releasing agent, foreign objects etc. from the manufacturing line and cutting oil, foreign objects etc. from the pipeline may contaminate the liquid which is to be handled.
- Do not operate pumps with a specification of 50Hz at 60Hz. It may cause damage due to overpressure or burn damage of motors etc. due to overload. Do not operate pumps with a specification of 60Hz at 50Hz. Pump performance may be reduced.
- Only repair technicians may disassemble, repair, modify the product or replace cables. Defects may cause failure, damage, electrification or fire.
- It is recommended that both periodic and daily inspections be performed in order to ensure that the pump will operate reliably for as long as possible. Failure to perform inspections may lead to pump failure, accidents etc. For periodic inspections, please consult your distributor or our nearest sales office.

Note

Specifications/Configurations may be altered as a result of improvements and such.
Unauthorized reproduction of this document is prohibited.

Kawamoto Pump Asia CO., LTD.

Head Office (Factory)

20 Moo 3, Rojana Industrial Park 2, Tambol Bangchang, Amphur Uthai,
Phranakhon Si Ayutthaya 13210 Thailand.
TEL: 0-3574-6860 FAX: 0-3574-6866

Sales Office

Promphan 3, 7th fl., Ladprao Soi 3, Chom Phon,
Chatuchak, Bangkok 10900, Thailand.
TEL: 02-024-6606

E-mail: kpa@kawamoto-pump.co.th
Website: www.kawamoto-pump.co.th

For any question about pumps, please contact your nearest distributor